

**BERESFORD CITY COUNCIL
SPECIAL MEETING AGENDA
Monday, September 23, 2024, 5:15 P.M.
Beresford City Council Chambers – 103 N. 3rd St.**

[1] – Pledge of Allegiance

[2] – Call to Order & Roll Call

[3] – Adopt Agenda

[4] – Public Hearing – Final Plat review of the Bak Housing Development

[5] – Visitors to be heard

- Ruby Zuraff – Roo’s Sanitation

[6] – Old Business

- Review options to replace ladder truck – Fire Chief Andrew Boden or Fire Dept. Representative

[7] – New Business

[8] – Discussion and Information Items

[9] – Adjournment

Welcome to your City Council Meeting

If you wish to participate in the discussion, the meeting provides several opportunities:

1. After the minutes are approved and public hearings are held, the mayor will ask if any visitors wish to be heard. Any item **NOT** on the agenda may be discussed. Items requiring action will then be placed on the next city council agenda for formal action.
2. During the discussion of agenda topics, anyone may comment if the Council is accepting public testimony. The mayor may recognize you if you raise your hand. Please state your name and address for the city minutes. Discussion occurs before motions are made and seconded. Discussion also occurs after the motion is seconded and before the vote.

If you would like to join the meeting via Zoom, please follow the instructions below.

Topic: Beresford City Council Meeting

Time: September 23, 2024, 05:15 PM Central Time (US and Canada)

Join Zoom Meeting

<https://us02web.zoom.us/j/8410157004?pwd=K0xERjZtbmw4Z3A2anVoT3JjbjFpdz09&omn=87980679574>

Meeting ID: 84 101 57004

Passcode: Beresford

Dial by your location

+1-253-205-0468 US

NOTICE OF PUBLIC HEARING

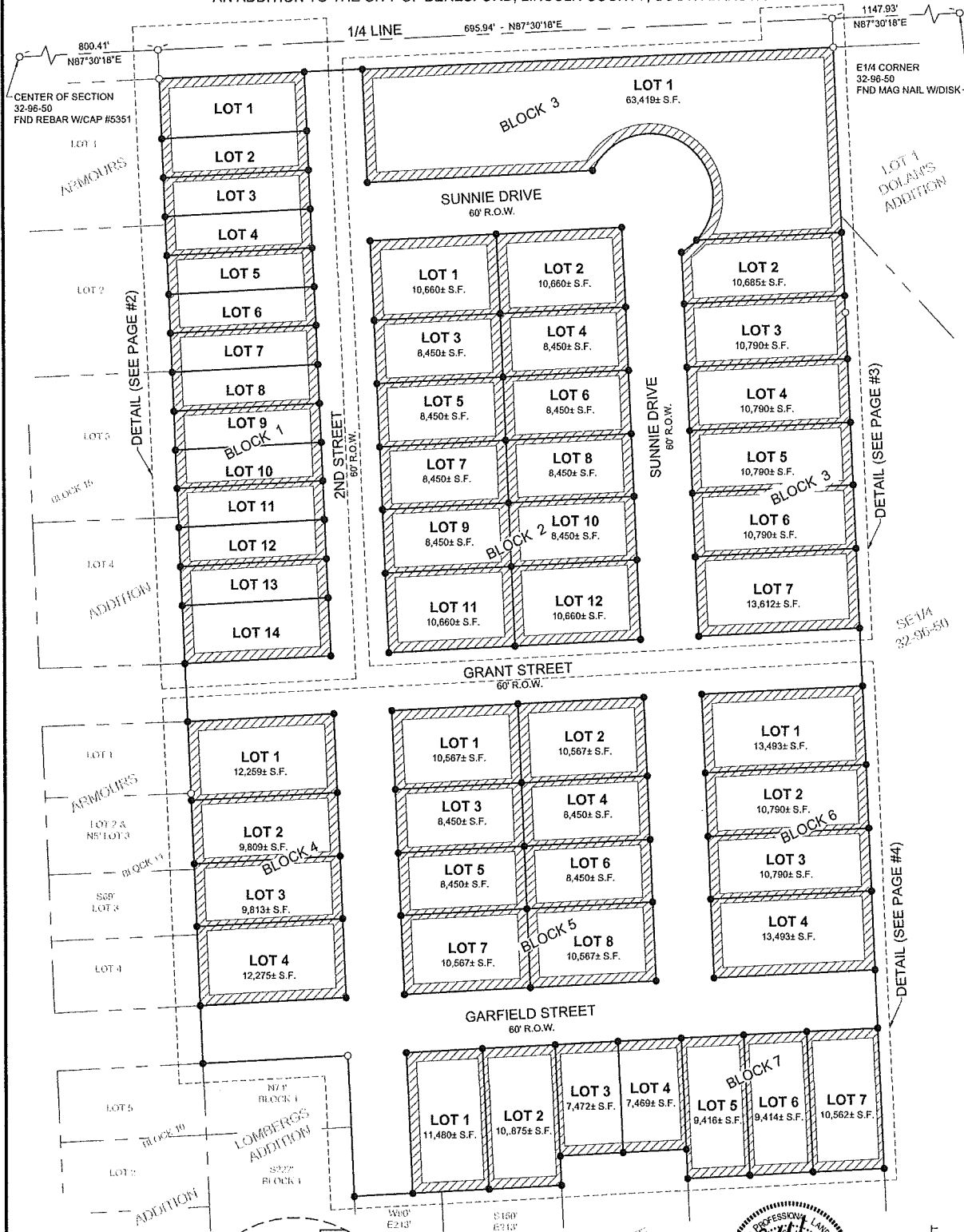
Pursuant to Appendix B, Subdivisions, Section 10.0202 of the REVISED MUNICIPAL ORDINANCES CITY OF BERESFORD, SOUTH DAKOTA, Procedure for Plat Approval, notice is hereby given that the Beresford City Council will hold a Public Hearing on September 23, 2024, at 5:15 pm in the City Council Chambers at 103 N. 3rd St. for a final plat review of the Bak Housing Development.

The purpose of this hearing is to review the final plat as submitted by the Beresford Planning Commission. The City Council invites all interested persons to attend and offer their comments. Those unable to attend may submit comments in writing, prior to the hearing, to: City of Beresford, 101 N. Third Street, Beresford, SD 57004-1796 or email jerry@beresfordsd.com.

Jerry Zeimetz
City Administrator

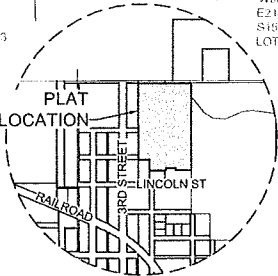
Publish in *Republic* – Sept. 12 and Sept. 19, 2024

PLAT OF
LOTS 1-14 IN BLOCK 1; LOTS 1-12 IN BLOCK 2; LOTS 1-7 IN BLOCK 3; LOTS 1-4 IN BLOCK 4; LOTS
1-8 IN BLOCK 5; LOTS 1-4 IN BLOCK 6; AND LOTS 1-7 IN BLOCK 7; ALL OF BAK FIRST ADDITION,
AN ADDITION TO THE CITY OF BERESFORD, LINCOLN COUNTY, SOUTH DAKOTA



AREA NOTE:
COMBINED AREA OF SUNNIE DRIVE RIGHT-OF-WAY, 2ND STREET RIGHT-OF-WAY, GRANT STREET RIGHT-OF-WAY, AND GARFIELD STREET RIGHT-OF-WAY: 213,422± SQ. FT. (4.80± ACRES)

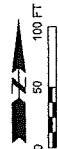
PREPARED BY:
BANNER ASSOCIATES, INC.
3900 N NORTHVIEW AVENUE
SIOUX FALLS, SD 57107
(605) 692-6342



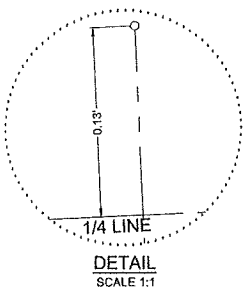
VACATION NOTICE
THIS PLAT WILL VACATE "BAK TRACT 1" AS SHOWN IN THE PLAT OF "BAK TRACT 1 OF PREVIOUSLY PLATTED LOT 1 AND FREEMAN TRACT 1 IN THE SE1/4 OF SECTION 32, T86N, R50W, 5TH P.M., CITY OF BERESFORD, LINCOLN COUNTY, SOUTH DAKOTA". FILED IN PLAT BOOK K ON PAGE 84 THEREOF.



- LEGEND**
- MONUMENT FOUND
 - SET 5/8" REBAR W/CAP #15971 (UNLESS NOTED)
 - ▨ UTILITY EASEMENT (UE)
 - - - DETAILS (SEE SUBSEQUENT PAGES)



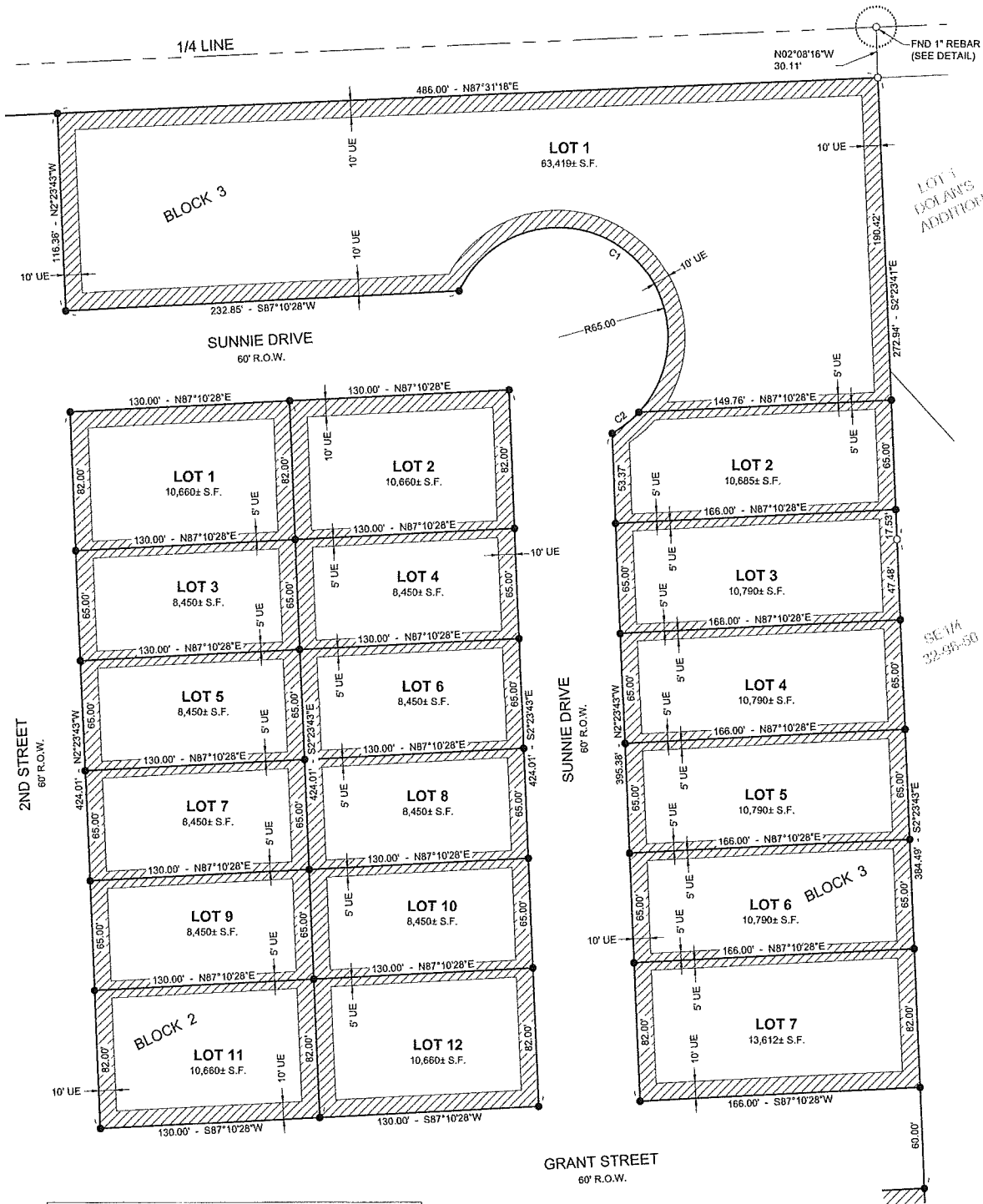
PLAT OF
LOTS 1-14 IN BLOCK 1; LOTS 1-12 IN BLOCK 2; LOTS 1-7 IN BLOCK 3; LOTS 1-4 IN BLOCK 4; LOTS
1-8 IN BLOCK 5; LOTS 1-4 IN BLOCK 6; AND LOTS 1-7 IN BLOCK 7; ALL OF BAK FIRST ADDITION,
AN ADDITION TO THE CITY OF BERESFORD, LINCOLN COUNTY, SOUTH DAKOTA



- LEGEND**
- MONUMENT FOUND (5/8" REBAR UNLESS NOTED)
 - SET 5/8" REBAR W/CAP #15971 (UNLESS NOTED)
 - ▨ UTILITY EASEMENT (UE)

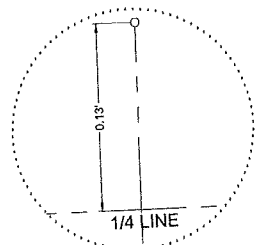


PLAT OF
LOTS 1-14 IN BLOCK 1; LOTS 1-12 IN BLOCK 2; LOTS 1-7 IN BLOCK 3; LOTS 1-4 IN BLOCK 4; LOTS 1-8 IN BLOCK 5; LOTS 1-4 IN BLOCK 6; AND LOTS 1-7 IN BLOCK 7; ALL OF BAK FIRST ADDITION,
 AN ADDITION TO THE CITY OF BERESFORD, LINCOLN COUNTY, SOUTH DAKOTA



CURVE TABLE				
CURVE #	ARC LENGTH	RADIUS	CHORD LENGTH	CHORD BEARING
C1	224.24'	65.00'	128.46'	N55°59'52"W
C2	20.13'	65.00'	20.05'	N51°42'13"E

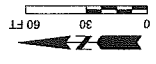
- LEGEND**
- MONUMENT FOUND (REBAR W/CAP #5313 UNLESS NOTED)
 - SET 5/8" REBAR W/CAP #15971 (UNLESS NOTED)
 - ▨ UTILITY EASEMENT (UE)



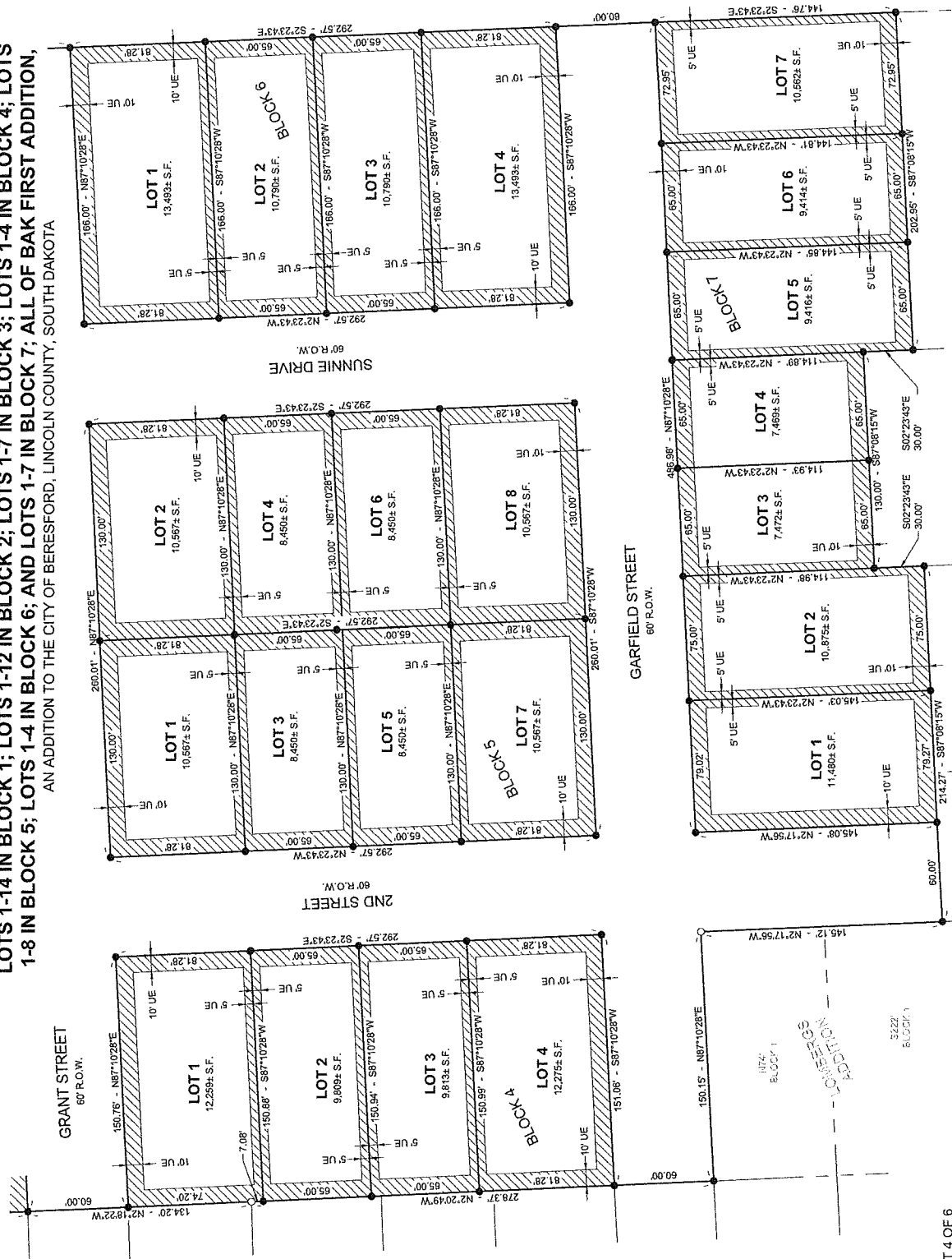
DETAIL
 SCALE: 1:1



PLAT OF
LOTS 1-14 IN BLOCK 1; LOTS 1-12 IN BLOCK 2; LOTS 1-7 IN BLOCK 3; LOTS 1-4 IN BLOCK 4; LOTS 1-8 IN BLOCK 5; LOTS 1-4 IN BLOCK 6; AND LOTS 1-7 IN BLOCK 7; ALL OF BAK FIRST ADDITION, AN ADDITION TO THE CITY OF BERESFORD, LINCOLN COUNTY, SOUTH DAKOTA



- LEGEND**
- MONUMENT FOUND 1/5" PIPE UNLESS NOTED
 - SET 5/8" REBAR W/ CAP #1971 UNLESS NOTED
 - ▨ UTILITY EASEMENT (UE)



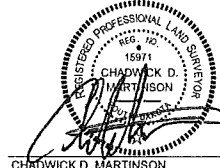
SURVEYOR'S CERTIFICATE

I, CHADWICK D. MARTINSON, A PROFESSIONAL LAND SURVEYOR IN THE STATE OF SOUTH DAKOTA, DO HEREBY CERTIFY THAT I DID, ON OR BEFORE SEPTEMBER, 2024, AT THE REQUEST OF THE OWNER(S) LISTED HEREON, SURVEY A PORTION OF THAT PARCEL OF LAND DESCRIBED AS FREEMAN'S TRACT ONE AND LOT 1 IN THE SE1/4, ALL OF SECTION 32-T96N-R50W AND PLATTED THE SAME AS SHOWN ON THE ABOVE PLAT.

THE SAME SHALL HEREAFTER BE KNOWN AND DESCRIBED AS LOTS 1-14 IN BLOCK 1; LOTS 1-12 IN BLOCK 2; LOTS 1-7 IN BLOCK 3; LOTS 1-4 IN BLOCK 4; LOTS 1-8 IN BLOCK 5; LOTS 1-4 IN BLOCK 6; AND LOTS 1-7 IN BLOCK 7; ALL OF BAK FIRST ADDITION, AN ADDITION TO THE CITY OF BERESFORD, LINCOLN COUNTY, SOUTH DAKOTA.

I HAVE SURVEYED THE TRACT OF LAND SHOWN, AND TO THE BEST OF MY KNOWLEDGE AND BELIEF, SAID PLAT IS AN ACCURATE REPRESENTATION OF SAID SURVEY.

IN WITNESS WHEREOF, I HAVE HEREUNTO SET MY HAND AND SEAL THIS 13TH DAY OF SEPTEMBER, 2024.



CHADWICK D. MARTINSON
PROFESSIONAL LAND SURVEYOR
REGISTRATION NO. 15971

OWNER'S CERTIFICATE

WE, THE CITY OF BERESFORD, THE ABSOLUTE AND UNQUALIFIED OWNER OF ALL OF THE LAND INCLUDED IN THE WITHIN AND FOREGOING PLAT, HEREBY CERTIFY THAT WE DID AUTHORIZE AND DO JOIN IN AND APPROVE THE ABOVE SURVEY AND PLAT FOR THE PURPOSES OF SUBDIVISION, AND THAT THE DEVELOPMENT OF THIS LAND SHALL CONFORM TO ALL EXISTING APPLICABLE ZONING, SUBDIVISION AND EROSION AND SEDIMENT CONTROL REGULATIONS. THERE IS HEREBY GRANTED TO THE CITY OF BERESFORD, OR TO THE HOLDER OF ANY UTILITY FRANCHISE, AN EASEMENT AT THE LOCATIONS SHOWN IN THE ABOVE PLAT FOR THE PURPOSE OF INSTALLING AND MAINTAINING ANY UTILITY LINE. WE HEREBY DEDICATED ANY LAND IF SHOWN ON THE ABOVE PLAT AND DESIGNATED AS A STREET, ROAD, ALLEY, PARK, PUBLIC GROUND OR OUTLOT IS HEREBY DEDICATED TO PUBLIC USE AS SUCH FOREVER, BUT SUCH DEDICATION SHALL NOT BE CONSTRUED TO BE A DONATION OF THE FEE OF SUCH LAND.

WE FURTHER CERTIFY THAT THIS PLATTING OF THE DESCRIBED LOTS 1-14 IN BLOCK 1; LOTS 1-12 IN BLOCK 2; LOTS 1-7 IN BLOCK 3; LOTS 1-4 IN BLOCK 4; LOTS 1-8 IN BLOCK 5; LOTS 1-4 IN BLOCK 6; AND LOTS 1-7 IN BLOCK 7; ALL OF BAK FIRST ADDITION, AN ADDITION TO THE CITY OF BERESFORD, LINCOLN COUNTY, SOUTH DAKOTA DOES HEREBY VACATE "BAK TRACT 1" OF THE FOLLOWING PLATTING: BAK TRACT 1 OF PREVIOUSLY PLATTED LOT 1 AND FREEMAN TRACT 1 IN THE SE1/4 OF SECTION 32, T96N, R50W, 5TH P.M., CITY OF BERESFORD, LINCOLN COUNTY, SOUTH DAKOTA ON FILE AT THE REGISTER OF DEEDS OFFICE IN PLAT BOOK K, PAGE 84. THE PLAT, HEREBY VACATED, BEING SITUATED WITHIN DESCRIBED LOTS 1-14 IN BLOCK 1; LOTS 1-12 IN BLOCK 2; LOTS 1-7 IN BLOCK 3; LOTS 1-4 IN BLOCK 4; LOTS 1-8 IN BLOCK 5; LOTS 1-4 IN BLOCK 6; AND LOTS 1-7 IN BLOCK 7; ALL OF BAK FIRST ADDITION, AN ADDITION TO THE CITY OF BERESFORD, LINCOLN COUNTY, SOUTH DAKOTA AS SURVEYED.

IN WITNESS WHEREOF, WE HAVE EXECUTED THIS OWNER'S CERTIFICATE THIS _____ DAY OF _____, 20____.

ELI SEELEY, MAYOR
CITY OF BERESFORD

ACKNOWLEDGMENT OF OWNER

STATE OF _____ }
COUNTY OF _____ } SS

ON THIS DAY, BEFORE ME, THE UNDERSIGNED, A NOTARY PUBLIC, WITHIN AND FOR THE STATE AND COUNTY AFORESAID, PERSONALLY APPEARED ELI SEELEY ACKNOWLEDGED THAT HE, AS MAYOR OF THE CITY OF BERESFORD, BEING AUTHORIZED SO TO DO, EXECUTED THE FOREGOING OWNER'S CERTIFICATE FOR THE PURPOSE THEREIN CONTAINED.

IN WITNESS MY HAND AND SEAL THIS _____ DAY OF _____, 20____.

NOTARY PUBLIC
MY COMMISSION EXPIRES _____

CITY PLANNING COMMISSION

BE IT RESOLVED BY THE BERESFORD PLANNING COMMISSION THAT THE ABOVE SURVEY AND PLAT OF LOTS 1-14 IN BLOCK 1; LOTS 1-12 IN BLOCK 2; LOTS 1-7 IN BLOCK 3; LOTS 1-4 IN BLOCK 4; LOTS 1-8 IN BLOCK 5; LOTS 1-4 IN BLOCK 6; AND LOTS 1-7 IN BLOCK 7; ALL OF BAK FIRST ADDITION, AN ADDITION TO THE CITY OF BERESFORD, LINCOLN COUNTY, SOUTH DAKOTA BE AND THE SAME IS HEREBY APPROVED.

DATED THIS _____ DAY OF _____, 20____.

CHAIRMAN, CITY PLANNING COMMISSION

CITY COUNCIL RESOLUTION

STATE OF SOUTH DAKOTA }
COUNTY OF LINCOLN } SS

WHEREAS, THE CITY OF BERESFORD, OWNER OF THE PARCEL OF LAND SHOWN IN THE ABOVE PLAT, HAVE SUBMITTED TO THE GOVERNING BOARD, A PROPOSED PLAT IN THE CITY OF BERESFORD. IT WAS MOVED BY _____ AND SECONDED BY _____ AND THE MOTION CARRIED THAT THE PLAT AS SHOWN HEREON AND AS DESCRIBED IN THE ACCOMPANYING CERTIFICATES OF AND DESIGNATED AS LOTS 1-14 IN BLOCK 1; LOTS 1-12 IN BLOCK 2; LOTS 1-7 IN BLOCK 3; LOTS 1-4 IN BLOCK 4; LOTS 1-8 IN BLOCK 5; LOTS 1-4 IN BLOCK 6; AND LOTS 1-7 IN BLOCK 7; ALL OF BAK FIRST ADDITION, AN ADDITION TO THE CITY OF BERESFORD, LINCOLN COUNTY, SOUTH DAKOTA BE APPROVED AND ACCEPTED AND IT APPEARING THAT ALL MUNICIPAL TAXES AND SPECIAL ASSESSMENTS, IF ANY, UPON SAID PLAT AND SURVEY HAVE BEEN EXECUTED ACCORDING TO THE LAW AND THE FINANCE OFFICER IS HEREBY INSTRUCTED TO ENDORSE ON SUCH PLAT A COPY OF THIS RESOLUTION AND TO CERTIFY THE SAME.

DATED THIS _____ DAY OF _____, 20____.

RESOLUTION NUMBER _____

MAYOR, CITY OF BERESFORD

I, THE UNDERSIGNED FINANCE OFFICER OF THE CITY OF BERESFORD, DO HEREBY CERTIFY THAT THE WITHIN AND FOREGOING IS A TRUE COPY OF THE RESOLUTION PASSED BY THE CITY COUNCIL OF THE CITY OF BERESFORD, SOUTH DAKOTA.

DATED THIS _____ DAY OF _____, 20____.

FINANCE OFFICER, CITY OF BERESFORD

COUNTY TREASURER CERTIFICATE

I, THE COUNTY TREASURER FOR LINCOLN COUNTY, SOUTH DAKOTA, DO HEREBY CERTIFY THAT ALL TAXES WHICH ARE LIENS UPON ANY OF THE PROPERTY INCLUDED IN THE ABOVE PLAT, AS SHOWN BY THE RECORDS OF MY OFFICE, HAVE BEEN PAID IN FULL.

DATED THIS _____ DAY OF _____, 20 _____.

TREASURER, LINCOLN COUNTY

DIRECTOR OF EQUALIZATION CERTIFICATE

I, THE DIRECTOR OF EQUALIZATION FOR LINCOLN COUNTY, SOUTH DAKOTA, DO HEREBY CERTIFY THAT A COPY OF THE ABOVE PLAT HAS BEEN RECEIVED BY MY OFFICE.

DATED THIS _____ DAY OF _____, 20 _____.

DIRECTOR OF EQUALIZATION, LINCOLN COUNTY

REGISTER OF DEEDS CERTIFICATE

STATE OF SOUTH DAKOTA }
COUNTY OF LINCOLN } SS

FILED FOR RECORD THIS _____ DAY OF _____, 20 _____, AT _____ O'CLOCK _____, AND RECORDED IN BOOK _____ OF PLATS ON PAGE _____ THEREIN.

REGISTER OF DEEDS, LINCOLN COUNTY



BERESFORD FIRE AND RESCUE

Volunteer Efforts / Professional Results

- **2006- Price is now \$325,00 and states negotiable-**
- E-One Fire Body
- Cyclone II E-One Chassis
- Custom
- Length: 37'
- Truck Height: 11' 4"
- Wheelbase: 220"
- GVWR: 45,140
- Seating for 6; 3 SCBA seats
- Mileage: 44,172
- Engine Hours: 5,329
- Detroit Series 60 445 HP Diesel Engine
- Engine Brake
- Allison Automatic Transmission
- Additional equipment not included with purchase unless otherwise listed.
- Interior Medical Cabinet

Pump - Tank

- Hale 1750 GPM Side-Mount Pump
- 500 Gallon Polypropylene Tank
- Driver's Side Discharges: (2) 2 1/2"
- Crosslays/Speedlays: Crosslays: (2)
- Officer's Side Discharge: (2) 2 1/2", (1) 3"
- Driver's Side Suction: (1) 2 1/2", (1) 6"
- Front Suction: (1) 5"
- Officer's Side Suction: (1) 2 1/2"
- Rear Suction: (1) 4"

Electrical - Lighting

- Electric Reels: (2) 200'
- Smart Power 10KW Diesel Generator
- Generator Hours: 637
- Telescoping Lights (2)
- LED Lighting
- Arrow stick Traffic Indicator

Options

Beresford Fire & Rescue

PO Box 1, Beresford, SD 57004

Fax 605-763-2401

fire@beresfordsd.com

BERESFORD FIRE AND RESCUE

Volunteer Efforts / Professional Results

- E-One : 75 Aerial Device
- Aerial Hours: 820
- Air Conditioning
- Ground Ladders: 35', 28', 16', (2) 10'
- Federal Q Siren

From Deputy Chief of Department-

A little background or history of this vehicle and why we are selling it; we purchased this vehicle back in a day when our department was running a Quint as our first out response vehicle. This is the second such Quint we've owned, which replaces our original one. We are no longer running this way, we now run first out with a rescue engine which has a 1000-gallon tank and 1500 gpm pump. We have a new (2022) front line engine and one reserve engine, these are the rigs we are using on a regular basis, the Quint does not get used; this is why the millage has been kept so low and why we are selling; it is a great rig, has had no major issues, it's just the way we operate today we just do not have a need for it, I'd love to see it go somewhere and get used. We keep up with all regular preventative maintenance as well as ladder and pump tests. Again, if there is something specific you would like to know please let us know, thank you for inquiring about it.



To: Glenside FPD
Attn: Deputy Chief
From: Emergency Vehicle Service Inc
Date: August 1, 2024

Please see below for your Quint's repair history:

7-15-24	Repaired the CAC tube and boot.
5-29-24	Repaired the rear brakes. Replaced the Q/R valve.
5-29-24	Serviced the rear end.
5-29-24	Replaced the EGR cooler.
5-29-24	Repaired the pump cooler.
5-29-24	Replaced the cam bushings, seals and axle gaskets.
5-29-24	Replaced the hub seals and the axle gaskets.
5-22-24	Repaired the headlights
4-5-24	Repaired the A/C system
3-26-24	Repaired the quartz lights
11-8-23	Repaired the outriggers retraction system.
11-8-23	Repaired the ladder alignment arrow
11-8-23	Replaced the outer slide blocks that were cracked.
9-8-23	Serviced the ladder
9-8-23	Repaired the wiring for the ladder nozzle.
9-6-23	Repaired the pump panel throttle
8-31-23	Repaired the dash a/c controls
8-31-23	Replaced a bad PDM
8-31-23	Replaced the a/c compressor
8-1-23	Repaired the ladder multiplex system



- 8-1-23 Repaired the cooling system.
- 7-21-23 Repaired a hydraulic leak from the generator.
- 7-11-23 Replaced the kingpins.
- 7-11-23 Performed a full chassis alignment.
- 6-30-23 Replaced the steering gear box.
- 6-27-23 Repaired the windshield wipers
- 6-27-23 Repaired the shore line air system.
- 6-6-23 Repaired the EGR valve
- 6-6-23 Replaced the ECM
- 6-6-23 Repaired the pump pressure sensor
- 6-6-23 Replaced the cam sensor
- 6-6-23 Repaired a leaking pto cover
- 6-3-23 Rebuilt the waterway nozzle gears
- 6-20-23 Replaced the pump master discharge gauge
- 3-15-23 Checked and adjusted the brakes,
- 3-3-23 Repaired the pump gauges
- 3-3-23 Repaired the ladder monitor
- 3-3-23 Repaired the transmission mounts
- 3-3-23 Repaired the driver's side wipers
- 10-24-22 Repaired the wiring for the ABS system.
- 10-13-22 Repaired leaking hydraulic lines at the tank
- 10-7-22 Repaired a leaking transfer case.
- 10-6-22 Repaired the right side cab warning light
- 9-26-22 Performed an (A) service
- 9-20-22 Repaired the air horns



9-20-22	Replaced a leaking oil pan gasket
9-19-22	Replaced the rear brakes.
9-17-22	Aligned the chassis
9-16-22	Replaced the torque rods
9-14-22	Repaired the pump primer
9-13-22	Repaired the cap tilt lock release cable.
9-12-22	Repaired a leaking trans cooler line.
9-12-22	Repaired the pump primer
9-9-22	Replaced the motor mounts
8-31-22	Replaced the three-way air valve for the brake system
6-29-22	Repaired the vehicles ignition system.
5-3-22	Repaired a broken L2 compartment door.
1-20-22	Replaced the batteries.
1-12-22	Repaired the left side cab scene light.
1-10-22	Rebuilt the outrigger down cylinders.
1-10-22	Replaced a bad rear outrigger cylinder block
12-14-21	Repaired the tank fill hose.
12-14-21	Serviced the generator.
12-13-21	Repaired the windshield washers.
11-23-21	Repaired the Q sired
11-30-21	Performed an (A) service

If you have any questions, please feel free to call me. 630-742-3757

Thank you,

Steve Garite

Emergency Vehicle Service Inc



**Performance Service Test By Emergency Vehicle Service Inc As Per NFPA 1911 And ISO Standards
Recommended On Rated and Non Rated Fire Apparatus**

Results of ISO Service Test For: 2022

Customer: Glenside FPD

Apparatus #: Quint 58	Fire TK MFG. Serial #: 131588	Fire TK MFG: E-one
Commercial Chassis Type: N/A	Year MFG: 2006	Model: Cyclone
Manufacturer's Custom Apparatus Type: Quint	Chassis Serial# or VIN #: 4ENGAAA8761001588	
Engine Make: Gas X Diescl	Engine Model: 60 Detroit	
Pump Make: Hale	Model: Q-max 175-23	Serial Number: 93283
Pump Rated Capacity: 1750 (GPM) at 150 (PSI)	Single Stage: X Two Stage:	
Pump Ratio to Engine: N/A	Test Site Location: Shop	
Source – Draft Commander Model 1911-3000		

Preparation BEFORE starting the SERVICE TEST

Chassis Engine Oil Level: X	Fire Pump Transmission Oil Level: X	Aux Pump Engine Oil Level: N/A
Chassis Radiator Liquid Level: X	Aux Pump Gear Box Oil Level: N/A	Aux Pump Engine Radiator Liquid Level: N/A
Primer Pump Oil Level: N/A	Type of Primer : Exhaust	Electric X Vacuum Other
Test Performed From Draft Commander 3000	Governed Engine RPM Speed With Pump Out of Gear: 2175	
Suction Hose Size: 6 (in), Length 17 (ft)		

	At Start of Tests	At End of Tests
Atmospheric Pressure	29.11	29.11
Air Temperature	61	62
Water Temperature	60	64
Elevation Of Test Site	600	600
Lift	3'	3'

Section 5.2.3.2 Page 9: All head lights and air conditioners. If provided shall be operating during pumping portion of this test.
Lights On: X Lights Off:

Maximum Vacuum Attained: 18 in	Vacuum Drop in 5 Minutes: 5 in	Time to Prime Pump: 18
--------------------------------	--------------------------------	------------------------

In order to receive the maximum credit of 100 points per truck, a pump test as per NFPA Standard 1911 must be performed at annual intervals.

Note: TK is Truck, MFG is Manufacturing and DC is for Discharge Hose

Emergency Vehicle Service Inc
Pump Test for NFPA 1911 Apparatus Guidelines of latest edition

20-MINUTE CAPACITY TEST 150 PSI

GPM PUMP RATED AT: 1750

Number of section of 3" 50ft fire hose: 4 Nozzle Size: 2 1/4 Position of transfer valve: X volume or _____ Pressure
 Number of section of 3 " 50 Ft Fire Hose
 Pump suction size: 6 Position of Pressure Control Relief Valve: N/A
 Size of Hard Suction used for Test: 6 Reduced to: N/A Number of Hard Suction used: 1

Time	RPM Tach Cab	RPM Tach Pump Panel	Engine Temp	Oil Pressure	Voltage	Auto Trans Temp	Apparatus Gauge Vac	Test Gauge Vac	Apparatus Gauge Pressure	Test Gauge Pressure	Pitot/Flow	Actual GMP Flowed
1035	1400	1400	190	50	14	180	8	8	150	150	90	1762
1040	1400	1400	190	50	14	180	8	8	150	150	90	1762
1045	1400	1400	190	50	14	180	8	8	150	150	90	1762
1050	1400	1400	190	50	14	180	8	8	150	150	90	1762
1055	1400	1400	190	50	14	180	8	8	150	150	90	1762

5-MINUTE OVERLOAD TEST 165 PSI GPM PUMP RATED AT: 1750

Time	RPM Tach Cab	RPM Tach Pump Panel	Engine Temp	Oil Pressure	Voltage	Auto Trans Temp	Apparatus Gauge Vac	Test Gauge Vac	Apparatus Gauge Pressure	Test Gauge Pressure	Pitot/Flow	Actual GMP Flowed
1100	1460	1460	190	50	14	180	8	8	160	165	90	1762
1105	1460	1460	190	50	14	180	8	8	160	165	90	1762

10-MINUTE 200 PSI 70% TEST

GPM PUMP RATED AT: 1750

Number of section of 3" 50ft fire hose: 4 Nozzle Size: 2 1/4 Position of transfer valve: X volume or _____ Pressure
 Number of section of 3 " 50 Ft Fire Hose
 Pump suction size: 6 Position of Pressure Control Relief Valve: C

Size of Hard Suction used for Test: 6 Reduced to: N/A Number of Hard Suction used: 1

Time	RPM Tach Cab	RPM Tach Pump Panel	Engine Temp	Oil Pressure	Voltage	Auto Trans Temp	Apparatus Gauge Vac	Test Gauge Vac	Apparatus Gauge Pressure	Test Gauge Pressure	Pitot/Flow	Actual GMP Flowed
1110	1540	1540	190	50	14	180	6	6	200	200	70	1260
1115	1550	1550	190	50	14	180	6	6	200	200	70	1260
1120	1540	1540	190	50	14	180	6	6	200	200	70	1260

10-MINUTE 250 PSI 50% TEST

GPM PUMP RATED AT: 1750

Number of section of 3" 50ft fire hose: 2 Nozzle Size: 1 1/4 Position of transfer valve: X volume or _____ Pressure
 Number of section of 3 " 50 Ft Fire Hose
 Pump suction size: 6 Position of Pressure Control Relief Valve: C

Size of Hard Suction used for Test: 6 Reduced to: N/A Number of Hard Suction used: 1

Time	RPM Tach Cab	RPM Tach Pump Panel	Engine Temp	Oil Pressure	Voltage	Auto Trans Temp	Apparatus Gauge Vac	Test Gauge Vac	Apparatus Gauge Pressure	Test Gauge Pressure	Pitot/Flow	Actual GMP Flowed
1125	1675	1675	190	50	14	180	3	3	250	250	94	881
1130	1675	1675	190	50	14	180	3	3	250	250	94	881
1135	1675	1675	190	50	14	180	3	3	250	250	94	881

Emergency Vehicle Service Inc
Pump Test for NFPA 1911 Apparatus Guidelines of latest edition

Pressure control device such as Relief Valve, Pressure Governor or other Pressure Control device was tested?

YES NO

Tested at 150 PSI at rated capacity and when slowly closing valves discharge pressure did not exceed more than 30 PSI.

If more than 30 PSI, what pressure did it go to? _____

Tank to Pump Flow Test performed YES _____ or NO _____ (this cost additional)

If yes, what was the GPM results? _____

Overall Pump Test Results

	Rated GPM 1750 Rated 100% Capacity 150 PSI Actual GPM Flowed	Rated GPM 1750 Rated 100% Capacity 165 PSI Actual GPM Flowed	Rated GPM 1750 Rated 70% Capacity 200 PSI Actual GPM Flowed	Rated GPM 1750 Rated 50% Capacity 250 PSI Actual GPM Flowed
Pump Capacity Actual GPM Flowed	35240	8810	12600	8810
Average nozzle pressure	90	90	70	94
Corrected pressure	N/A	N/A	N/A	N/A
Actual Gallons per minute	1762	1762	1260	881
Average pump pressure	150	165	200	250
RPM – Engine Cab	1400	1460	1540	1675
RPM – Pump Panel	1400	1460	1540	1675

EVS Service Technician: 100
Next Service Test Due Date: 10-25-23
Witnessed By: N/A
Witnessed by What Dept.: N/A

Date of Service Test: 10-25-22
Title: N/A

The following repairs are recommended to bring your fire apparatus to meet the fire pump service test as per NFPA 1911 and ISO recommended standards:

Repairs are needed: Yes or No

If repairs are needed, they are listed on an attached sheet titled Pump Service Test Needed Repairs

Overall, Pump Service Test Results: Passed or Failed

Thank you for using Emergency Vehicle Service, Inc. for your Pump Service Test

We would be more than happy to help you with all your apparatus maintenance and repair needs.

www.evsfireservice.com



PO Box 276 | New Concord, OH 43762 | phone: 740-404-3780 | web: concordinspection.com

CERTIFICATION OF INSPECTION AERIAL LIFT DEVICE

Certification Number:	C-1794
Owner:	GLENSIDE FIRE DEPARTMENT
Address:	1608 BLOOMINGDALE RD, GLENDAL HEIGHTS, IL 60139
Type of Unit:	75' LADDER
Year:	2006
Serial Number:	4ENGAAA8761001588
Owner's ID Number:	SO 131588
Boom Type:	3 SECTION

I certify that on **8/23/2024**, the above described device was inspected and tested in reference to NFPA 1911.

Complete test results are recorded in the Concord Inspection LLC Aerial Lift Device inspection report number **C-1794**.

The effectiveness of such certification shall in no event exceed one year from the above date.

Inspector: **TRISTIAN CALDERHEAD**

Company Official Signature:

Tristian Calderhead



PO Box 276 | New Concord, OH 43762 | 740-404-3780 | keith.hamilton@concordinspection.com



REPORT OF INSPECTION

Annual Safety Inspection for FIRE APPARATUS AERIAL

In accordance with
NFPA 1911 Latest Version
Performance Testing of Aerial Devices

Fire Department: **GLENSIDE FIRE DEPARTMENT**
Location: **1608 BLOOMINGDALE RD, GLENDALE HEIGHTS, IL 60139**
Manufacturer: **E-ONE**
Year Manufactured: **2006**
Date of Inspection: **8-23-2024**
Unit Number: **QUINT 58**
Serial Number: **4ENGAAA8761001588**
Type of Unit: **LADDER**
Model Number: **HP 75**

Inspected By: **TRISTIAN CALDERHEAD**

Work Order #: **C-1794**

P.O. #:



PO Box 276 | New Concord, OH 43762 | 740-404-3780 | keith.hamilton@concordinspection.com

Fire Dept: **GLENSIDE FIRE DEPARTMENT**

Location: **1608 BLOOMINGDALE RD, GLENDALE HEIGHTS, IL 60139**

Unit #: **QUINT 58**

Date: **8-23-2024**

Rework Recommended: Yes No

Immediate Rework Recommended: Yes No

R = Required Items:

Items that do not meet Concord Inspection LLC specifications, manufacturer's specifications, and applicable NFPA standards are items which Concord Inspection mandates be repaired or replaced before issuance of an Inspection certificate.

The location of these items may be found by the general description below. Weld discontinuities, if any, are marked with felt pen at their specific location by inspector. Left and right, as listed, are viewed standing on the turntable looking up at the ladder.

The ladder sections are numbered from the bottom up, base assembly being 1st section, 2nd section, 3rd section, and 4th section. Rung, vertical and diagonal support members (truss-members) on each section are numbered starting at the base on each ladder with number on and increasing in number to the top of each ladder section. Left and right on the vehicle chassis are viewed as left being the driver's side and right being the Officer's side.

Concord Inspection LLC will allow a maximum of sixty (60) calendar days from the date of the report for the required repairs to be made. If repairs cannot be completed in this time frame, please notify Concord Inspection LLC at (740) 404-3780 prior to the lapse of this period.

C = Recommended Items:

These are items, which we recommend be repaired, replaced, or installed or preventative procedures initiated and implemented.

I = Informational Items:

These are items which we have found to be in noncompliance with today's standards, or items which should be checked periodically, or items listed solely for your general information.

Summary of Defects

Category	Item #	
C	1	Crack at bolt holes on outer slide pads at tip of 1 st and 2 nd sections
C	2	Crack at bolt holes on outer monitor sled slide pads
C	3	Grease base rails
C	4	Nozzle waterway mounting bolt missing washer
C	5	Driver and officer side seat belts are damaged. Per NFPA 8.2.2 (1) (2) those seats shall be removed from service



PO Box 276 | New Concord, OH 43762 | 740-404-3780 | keith.hamilton@concordinspection.com

Inspection Report

Reference Document: NFPA 1911

Customer: **GLENSIDE FIRE DEPARTMENT**

Location: **1608 BLOOMINGDALE RD, GLENDALE HEIGHTS, IL 60139**

Manufacturing Year: **2006**

Serial Number: **4ENGAAA8761001588**

Job Number: **C-1794**

Person Contacted:

Unit Type: **LADDER**

Inspector: **TRISTIAN CALDERHEAD**

Inspection Date: **8-23-2024**

Dear _____ :

This is to certify that all items listed under "REQUIRED ITEMS" on your inspection report have been completed.

These items have been completed in accordance with the manufacturer's recommendations and the best business practices available to our department.

Signed: _____

Title: _____

Important Notes

1. *Enclosed with the above letter, copies of all work records and invoices regarding the repair, which was conducted on the apparatus in the accordance with our report.*
2. *This letter and the associated documents may be sent via email to keith.hamilton@concordinspection.com or mailed to the address located at the top of the page.*
3. *Concord Inspection LLC will allow a maximum of sixty (60) calendar days from the date of the report for the required repairs to be made. If repairs cannot be completed in this time frame, please notify Concord Inspection LLC at (740) 404-3780 prior to the lapse of this period.*
4. *A Certificate of Inspection will be issued upon receipt of this signed letter and supporting documents that the corrections required by this report have been completed.*

If you have any questions, or require any additional information, please do not hesitate to contact me.

Keith Hamilton
(740) 404-3780
keith.hamilton@concordinspection.com



PO Box 276 | New Concord, OH 43762 | 740-404-3780 | keith.hamilton@concordinspection.com

Fire Dept: **GLENSIDE FIRE DEPARTMENT**

Location: **1608 BLOOMINGDALE RD, GLENDALE HEIGHTS, IL 60139**

Manufacturer: **E-ONE**

Date: **8-23-2024**

Operational Test

Set Outriggers:	30	Seconds
Raise Lower 60°:	24	Seconds
Complete Rotation:	100	Seconds
Raise to Max Ht:	24	Seconds
Raise Lower, Rotate 90°, Maise to Max Ht:	55	Seconds

Load Test / Stability Test

Horizontal Load Test:	500	LBS @ 10°
Max Elevation Load Test:	X	LBS @ X°
Stability Load Test:	X	LBS @ X°

Bolt Torque Check of Accessible Bolts

	FT LBS	Grade
Torque Box to Frame:	320	8
Turnable Bearing Bolts:	X	X
Upper	320	8
Lower	X	X
Tractor Drawn Components:	X	X
Frame	X	X
Suspension	X	X
Rotation Gear Reduction Box:	320	8



PO Box 276 | New Concord, OH 43762 | 740-404-3780 | keith.hamilton@concordinspection.com

Fire Dept: **GLENSIDE FIRE DEPARTMENT**

Location: **1608 BLOOMINGDALE RD, GLENDALE HEIGHTS, IL 60139**

Manufacturer: **E-ONE**

Date: **8-23-2024**

Unit #: **QUINT 58**

Serial #: **4ENGAAA8761001588**

Model #: **HP 75**

Mfg. Date: **2006**

Aerial Hours: **832**

Engine Hours: **5364**

Odometer: **44492**

Weather Conditions: **CLEAR**

Temperature: **79**

Humidity: **40%**

Wind: **9 mph**

Operational Test: Annual 5 YR Repair Collision

NTD Methods and Inspections

	OK	Defects	N/A
Ultrasonic Test of Pins	X		
Thickness Test of Ladder Rails			X
Magnetic Particle Test of Welds			X
Dye Penetrant			X
Hardness Test of Aluminum	X		
Visual Inspection	X		
Operational Test of Unit	X		
Bolt Torque Check of Accessible	X		
Drift Test of Hydraulic Cylinders	X		
Load Test of Aerial Ladders	X		
Stability Test of Aerial Platforms			X

Required Measurements

Operating Hydraulic Pressure: **1800 psi**

Bearing Clearance: **.028"**

Relief Hydraulic Pressure: **1800 psi**

Maximum Height: **75'**

Maximum Reach: **X**

Hydraulic Cylinder Leak Down:

Outriggers LF: **X** RF: **X** LR: **0** RR: **0**

Street-Side Lift Cylinder: **1/8"** Officer-Side Lift Cylinder: **1/8"**

Extension Cylinder: **0**

Ladder Section Twist: Base: **0** 1st: **0** 2nd: **0** 3rd: **X** 4th: **X**

Base Rale Thickness: Base: **X** 1st: **X** 2nd: **X** 3rd: **X** 4th: **X**



PO Box 276 | New Concord, OH 43762 | 740-404-3780 | keith.hamilton@concordinspection.com

DISCLAIMER

GLENSIDE FD ("Customer") has requested Concord Inspection LLC to inspect, test and assess the components as set forth in the Purchase Order attached hereto (the "Components" and individually the "Component") pursuant to the protocol established by Concord Inspection LLC in accordance with ASNT CP-105 and prevailing industry standards (the "Assessment") in order to induce Concord Inspection LLC to issue a certification for each such Component.

The Assessment is provided to the Customer with the express understanding that Concord Inspection LLC's responsibility is solely to conduct the Assessment and assist Customer interpreting the results of the Assessment, if requested by the Customer. The Customer further understands that the Assessment only reflects the condition of the Components tested versus industry standards and within the scope of the work authorized by the Customer.

1. Concord Inspection LLC has not reviewed the maintenance records for the equipment or Components nor does Concord Inspection LLC have knowledge of the actual use of the equipment before or after the date of the testing or inspection. No attempt has been made, and no opinion is rendered, with respect to any conditions of equipment or the Components other than as reflected in the scope of work and as expressly stated in the Assessment. Specifically, but without limitation, no information, testing or inspection services are rendered concerning equipment design, suitability of the equipment for any particular purpose or the future serviceability of the equipment or the Components. The Assessment should not be construed as a statement that the equipment or the Components are safe or serviceable.
2. **CONCORD INSPECTION LLC MAKES NO WARRANTIES, EXPRESS OR IMPLIED, ABOUT THE COMPONENTS TESTED OR ANY OTHER PARTS, COMPONENTS OR THE EQUIPMENT ON WHICH THE COMPONENT(S) IS MOUNTED; AND CONCORD INSPECTION LLC EXPRESSLY DISCLAIMS ANY WARRANTY OF MERCHANTABILITY, OR FITNESS FOR A PARTICULAR PURPOSE, AND ALL OTHER WARRANTIES ARE HEREBY EXPRESSLY DENIED.**
3. Additionally, Customer is advised that the Assessment contains information that may be time sensitive and that the Assessment was prepared by Concord Inspection LLC subject to the conditions detailed in the Assessment.
4. If at any time this Assessment is to be used by a third party other than the Customer, Concord Inspection LLC has the right to verify, at third party's expense, the accuracy of the information contained in the Assessment, as deemed necessary by Concord Inspection LLC, based upon the passage of time or other material change in conditions since the date of the Assessment.
5. The information provided in this Assessment is not a substitute for proper use, maintenance, modification, inspection or repair of the equipment, or the assurance of safe operation of the equipment within its intended limitation. Furthermore, nothing in the Assessment should be construed as a recommendation for corrective action, which is the sole responsibility of



PO Box 276 | New Concord, OH 43762 | 740-404-3780 | keith.hamilton@concordinspection.com

Customer. The Assessment is intended solely for informational purposes of Customer and should not be utilized or relied upon by any other person.

6. **WARNING!** These tests used in making the Assessment determine the state of the equipment or Component at the time the tests were performed only! Any accidents, overloads, or damage caused by abuse of this equipment after the Assessment could result in the test performed no longer being valid as structural damage may have occurred even though the equipment visually may appear intact and usable after said accidents, overloads, or abuse.
7. A load test must be conducted successfully on any item that requires load bearing components to be removed or replaced before a certificate can be issued. On all other defects, after repairs have been completed in accordance with the manufacturer's guidelines in order to speed the certification process for the repaired Component(s), please send a written notice including the job order number, unit number of vehicle and copy of the repair invoice with the signature of the Fire Department's (or Company) representative to the following address:

Concord Inspection LLC
PO Box 276
New Concord, OH 43762

8. Concord Inspection LLC will only issue a certificate of inspection upon the successful completion of the inspection and the repair of any defects that may affect certification. These defects will be listed as affecting certification on the summary page of the Assessment.
9. Customer agrees to indemnify, defend and hold Concord Inspection LLC harmless from and against any and all liabilities, claims, damages and costs (including reasonable attorney's fees) that arise out of any use of the Assessment and of equipment and Components tested.
10. In the event that any questions arise with respect to the scope or meaning of Concord Inspection LLC's statements or conclusions, you are directed to immediately contact us for clarification, explanation or to update the Assessment. These services will be provided in accordance with Concord Inspection LLC's standard commercial rates and terms in effect at the time of the request.

VIN Number: 4ENGAAA8761001588

(Print Name)

(Customer Signature)

CONCORD INSPECTION LLC

By: _____
KEITH HAMILTON



PO Box 276 | New Concord, OH 43762 | 740-404-3780 | keith.hamilton@concordinspection.com

Fire Dept: **GLENSIDE FIRE DEPARTMENT**

Location: **1608 BLOOMINGDALE RD, GLENDALE HEIGHTS, IL 60139**

Unit #: **QUINT 58**

Date: **8-23-2024**

Visual Checklist per NFPA 1911 Latest Version

- 19.8 Inspecting and Testing Aerial Ladders.
- 19.8.2 Service Records
- 19.8.3 Hydraulic Components
- 19.8.4 Turntable, Torque Box, Suspension, and Test Tractor-Drawn Components Inspection Test
- 19.8.4.1 Rotation-Bearing Mounting Bolts
- 19.8.4.2 Torque Box Mounting to Frame
- 19.8.4.3 Tractor-Drawn Components Mounting to Frame
- 19.8.4.4 Suspension System
- 19.8.4.5 Rotation Gear and Bearing
- 19.8.4.6 Rotation Gear Reduction Box Mounting
- 19.8.4.7 Structural Components
- 19.8.4.8 Rotation Hydraulic Swivel
- 19.8.4.9 Hydraulic Lines and Hose
- 19.8.4.10 Elevation, Extension, and Rotation Lock(s)
- 19.8.4.11 Power Takeoff (PTO)
- 19.8.4.12 Hydraulic Pump
- 19.8.4.13 Collector Rings
- 19.8.4.14 Elevation Cylinder Anchor Ears and Plates
- 19.8.4.15 Elevation Cylinder Pins
- 19.8.4.16 Elevation Cylinders
- 19.8.4.17 Holding Valves on Elevation Cylinders
- 19.8.4.18 Operating Controls
- 19.8.4.19 Load Limit Indicators
- 19.8.4.20 Emergency Hand-Crank Controls
- 19.8.4.21 Auxiliary Hydraulic Power
- 19.8.4.22 Turntable Alignment Indicator
- 19.8.4.23 Throttle Control
- 19.8.4.24 Communication System
- 19.8.4.25 Relief Hydraulic Pressure
- 19.8.4.26 Unit Main Frame
- 19.8.4.27 Transmission/Aerial Device Interlocks
- 19.8.4.28 Engine Speed Interlocks
- 19.8.4.29 Breathing Air Systems
- 19.8.5 Stabilizer Inspection and Test
- 19.8.5.1 Stabilizer Structural Components
- 19.8.5.2 Stabilizer Pads
- 19.8.5.3 Stabilizer Mounting to Frame or Torque Box
- 19.8.5.4 Hydraulic Lines and Hoses in Stabilizer System
- 19.8.5.5 Stabilizer Interlock System
- 19.8.5.6 Stabilizer Warning Device
- 19.8.5.7 Stabilizer Extension Cylinder Pins and Hinge Pins
- 19.8.5.8 Stabilizer Extension Cylinders
- 19.8.5.9 Holding Valves on Extension Cylinders
- 19.8.5.10 Operating Controls
- 19.8.5.11 Leveling Indicator
- 19.8.5.12 Diverter Valve
- 19.8.5.13 Positive Stops
- 19.8.5.14 Stabilizer Deployment
- 19.8.5.15 Manual Spring Locks
- 19.8.5.16 Tractor Lockout Device
- 19.8.6 Aerial Ladder Inspection and Test
- 19.8.6.1 Structural Modifications, Improper Repairs, or Added Weight
- 19.8.6.2 Aerial Ladder Weldments
- 19.8.6.3 Aerial Ladder Fasteners
- 19.8.6.4 Ladder Section Alignment
- 19.8.6.5 Hydraulic, Pneumatic, and Electrical Lines in Ladder Sections
- 19.8.6.6 Top Rails
- 19.8.6.7 Vertical and Diagonal Braces
- 19.8.6.8 Base Rails
- 19.8.6.9 Rungs
- 19.8.6.10 Folding Steps
- 19.8.6.11 Rollers
- 19.8.6.12 Guides, Babbitts, Wear Strips, Pads, and Slide Blocks
- 19.8.6.13 Extension Sheaves
- 19.8.6.14 Extension Cables
- 19.8.6.15 Extension and Retraction Motor
- 19.8.6.16 Cable Separation Guide
- 19.8.6.17 Winch Holding Capacity
- 19.8.6.18 Brake-Holding Capacity
- 19.8.6.19 Extension, Elevation, and Rung Alignment Indicators
- 19.8.6.20 Ladder Locks
- 19.8.6.21 Ladder Cradle
- 19.8.6.22 Ladder Bed Lock
- 19.8.6.23 Stop Mechanism
- 19.8.6.24 Maximum Extension Warning Device
- 19.8.6.25 Ladder Illumination
- 19.8.6.26 Extension Cylinder Anchor Ears and Plates
- 19.8.6.27 Extension Cylinder Pins
- 19.8.6.28 Extension Cylinder
- 19.8.6.29 Holding Valves on Extension Cylinder
- 19.8.6.30 Tip Controls
- 19.8.7 Load Testing
- 19.8.7.5 Maximum Elevation Load Test
- 19.8.8 Operating Test
- 19.8.9 Waterway System Test
- 19.8.9.5 Flowmeters
- 19.8.9.6 Water Pressure Gauges
- 19.8.9.7 Relief Valve
- 19.8.10 Signs
- 19.8.11* Hydraulic Fluid
- 19.8.12* Records